



TQ823 SERIES

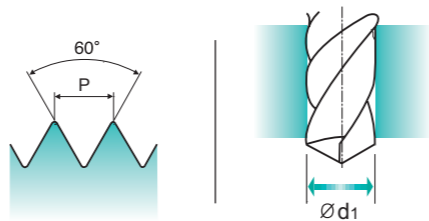
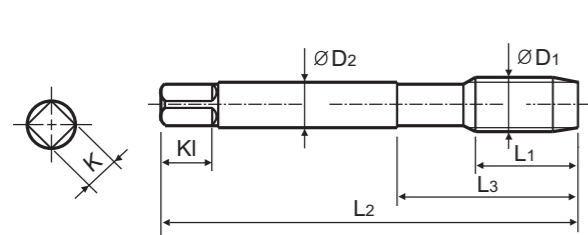
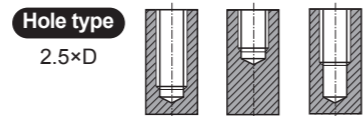
M ISO metric coarse threads DIN 13

- Metrisches ISO-Gewinde DIN 13
- ISO MÉTRIQUE DIN13
- ISO Metrico passo grosso DIN 13

Machine taps
Maschinengewindebohrer

► Suitable for tapping blind holes due to special flute geometry and excellent chip evacuation.

► Geeignet zum Gewinden von Sacklöchern dank besonderer Nutengeometrie und ausgezeichneter Spanabfuhr.



Material groups: VG HSS PM DIN 371/376 6H 60° C R40 Vap p.B197

Recommended ToolHolder: Plain Shank TAPPING ER CHUCK D215-220 TAPPING CHUCK D221-228 ONE STEP TAPPING CHUCK D211-213

Unit : mm

SIZE	Pitch	EDP No.	Thread Length	Overall Length	Neck Length	Shank Diameter	Square Size	Square Length	No. of Flute	Tapping Drill Diameter
ØD1	P	Vap	L1	L2	L3	ØD2	K	K1	Z	Ød1
M2	× 0.4	TQ823136	8	45	13	2.8	2.1	5	3	1.6
M2.2	× 0.45	TQ823156	8	45	13	2.8	2.1	5	3	1.75
M2.5	× 0.45	TQ823176	9	50	15	2.8	2.1	5	3	2.05
M3	× 0.5	TQ823206	6	56	18	3.5	2.7	6	3	2.5
M3.5	× 0.6	TQ823226	7	56	20	4	3	6	3	2.9
M4	× 0.7	TQ823246	7	63	21	4.5	3.4	6	3	3.3
M4.5	× 0.75	TQ823266	8	70	25	6	4.9	8	3	3.7
M5	× 0.8	TQ823286	8	70	25	6	4.9	8	3	4.2
M6	× 1	TQ823316	10	80	30	6	4.9	8	3	5
M7	× 1	TQ823346	10	80	30	7	5.5	8	3	6
M8	× 1.25	TQ823366	13	90	35	8	6.2	9	3	6.8
M10	× 1.5	TQ823426	15	100	39	10	8	11	3	8.5
M12	× 1.75	TQ823506	18	110	44	9	7	10	3	10.2

►DIN 371(M2~M10) and DIN 376(M12)

◎ : Excellent ○ : Good

ISO	P										M				K					
	Non-alloy steel					Low alloy steel					High alloyed steel, and tool steel				Stainless steel		Grey cast iron	Nodular cast iron		Malleable cast iron
VDI 3323	1	2	3	4	5	6	7	8	9	10	11	12	13	14	15	16	17	18	19	20
HRC	13	25	28	32	35	10	29	32	38	15	35	15	23	10	10	26	3	25	21	
HB	125	190	250	270	300	180	275	300	350	200	325	200	240	180	180	260	160	250	130	230
Recommended	○	○	○	◎	○	○	○	◎	○	○	○	○	○	○	○	○	○	○	○	○

ISO	N										S						H				
	Aluminum-wrought alloy		Aluminum-cast, alloyed			Copper and Copper Alloys (Bronze / Brass)					Non Metallic Materials		Heat Resistant Super Alloys				Titanium Alloys		Hardened steel	Chilled Cast Iron	Hardened Cast Iron
VDI 3323	21	22	23	24	25	26	27	28	29	30	31	32	33	34	35	36	37	38	39	40	41
HRC	21	22	23	24	25	26	27	28	29	30	31	32	33	34	35	36	37	38	39	40	41
HB	60	100	75	90	130	110	90	100			200	280	250	350	320	400Rm	1050Rm	550	630	400	550
Recommended	○	○	○	○	○	○	○	○	○	○	○	○	○	○	○	○	○	○	○	○	○



TR823 SERIES

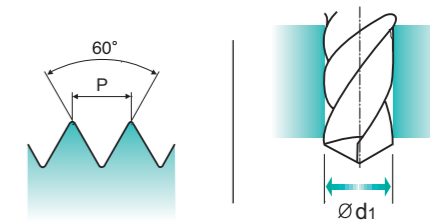
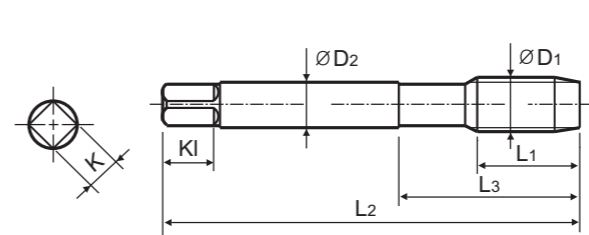
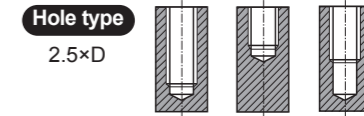
M ISO metric coarse threads DIN 13

- Metrisches ISO-Gewinde DIN 13
- ISO MÉTRIQUE DIN13
- ISO Metrico passo grosso DIN 13

Machine taps
Maschinengewindebohrer

► Suitable for tapping blind holes due to special flute geometry and excellent chip evacuation.

► Geeignet zum Gewinden von Sacklöchern dank besonderer Nutengeometrie und ausgezeichneter Spanabfuhr.



Material groups: VG HSS PM DIN 371/376 6H 60° C R40 Bright p.B197

Recommended ToolHolder: Plain Shank TAPPING ER CHUCK D215-220 TAPPING CHUCK D221-228 ONE STEP TAPPING CHUCK D211-213

Unit : mm

SIZE	Pitch	EDP No.	Thread Length	Overall Length	Neck Length	Shank Diameter	Square Size	Square Length	No. of Flute	Tapping Drill Diameter
ØD1	P	Bright	L1	L2	L3	ØD2	K	K1	Z	Ød1
M2	× 0.4	TR823136	8	45	13	2.8	2.1	5	3	1.6
M2.2	× 0.45	TR823156	8	45	13	2.8	2.1	5	3	1.75
M2.5	× 0.45	TR823176	9	50	15	2.8	2.1	5	3	2.05
M3	× 0.5	TR823206	6	56	18	3.5	2.7	6	3	2.5
M3.5	× 0.6	TR823226	7	56	20	4	3	6	3	2.9
M4	× 0.7	TR823246	7	63	21	4.5	3.4	6	3	3.3
M4.5	× 0.75	TR823266	8	70	25	6	4.9	8	3	3.7
M5	× 0.8	TR823286	8	70	25	6	4.9	8	3	4.2
M6	× 1	TR823316	10	80	30	6	4.9	8	3	5
M7	× 1	TR823346	10	80	30	7	5.5	8	3	6
M8	× 1.25	TR823366	13	90	35	8	6.2	9	3	6.8
M10	× 1.5	TR823426	15	100	39	10	8	11	3	8.5
M12	× 1.75	TR823506	18	110	44	9	7	10	3	10.2

►DIN 371(M2~M10) and DIN 376(M12)

◎ : Excellent ○ : Good

ISO	P										M				K					
	Non-alloy steel					Low alloy steel					High alloyed steel, and tool steel				Stainless steel		Grey cast iron	Nodular cast iron		Malleable cast iron
VDI 3323	1	2	3	4	5	6	7	8	9	10	11	12	13	14	15	16	17	18	19	20
HRC	13	25	28	32	35	10	29	32	38	15	35	15	23	10	10	26	3	25	21	
HB	125	190	250	270	300	180	275	300	350	200	325	200	240	180	180	260	160	250	130	230
Recommended	○	○	○	◎	○	○	○	◎	○	○	○	○	○	○	○	○	○	○	○	○

ISO	N										S						H				
	Aluminum-wrought alloy		Aluminum-cast, alloyed			Copper and Copper Alloys (Bronze / Brass)					Non Metallic Materials		Heat Resistant Super Alloys				Titanium Alloys		Hardened steel	Chilled Cast Iron	Hardened Cast Iron
VDI 3323	21	22	23	24	25	26	27	28	29	30	31	32	33	34	35	36	37	38	39	40	41
HRC	21	22	23	24	25	26	27	28	29	30	31	32	33	34	35	36	37	38	39	40	41
HB	60	100	75	90	130	110	90	100			200	280	250	350	320	400Rm	1050Rm	550	630	400	550
Recommended	○	○	○	○	○	○	○	○	○	○	○	○	○	○	○	○	○	○	○	○	○