



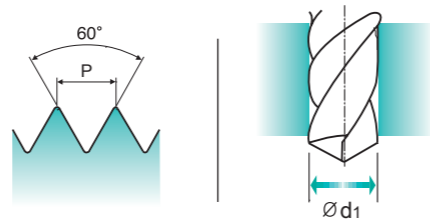
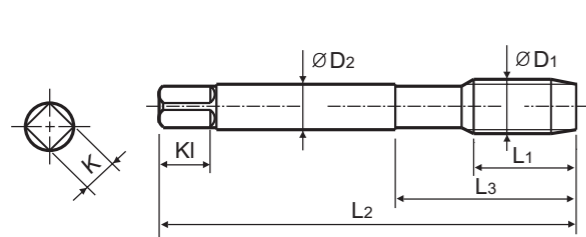
TC214 SERIES

UNC Unified coarse threads
 Unified Grobgewinde
 UNC
 Unificato passo grosso

Machine taps
 Maschinengewindebohrer

► Suitable for through hole in more cutting speed than other taps due to thick web.

► Geeignet für Durchgangslöcher in höherer Schnittgeschwindigkeit als bei anderen Gewindebohrern dank größerer Kerndicke.



Material groups: **GS** HSS-E DIN 371/376 2B 60° B Bright p.B169

Recommended ToolHolder: Plain Shank TAPPING ER CHUCK D215-220 TAPPING CHUCK D221-228 ONE STEP TAPPING CHUCK D211-213

Recommended Cutting Page : P.161 Unit : mm

SIZE	TPI	EDP No.	Thread Length	Overall Length	Neck Length	Shank Diameter	Square Size	Square Length	No. of Flute	Tapping Drill Diameter
ØD1		Bright	L1	L2	L3	ØD2	K	KI	Z	Ød1
#4 - 40UNC		TC214162	11	56	18	3.5	2.7	6	3	2.3
#5 - 40UNC		TC214202	11	56	18	3.5	2.7	6	3	2.6
#6 - 32UNC		TC214242	12	56	20	4	3	6	3	2.85
#8 - 32UNC		TC214282	13	63	21	4.5	3.4	6	3	3.5
#10 - 24UNC		TC214322	15	70	25	6	4.9	8	3	3.9
#12 - 24UNC		TC214362	16	80	30	6	4.9	8	3	4.5
1/4 - 20UNC		TC214402	17	80	30	7	5.5	8	3	5.2
5/16 - 18UNC		TC214442	20	90	35	8	6.2	9	3	6.6
3/8 - 16UNC		TC214482	22	100	39	9	7	10	3	8
7/16 - 14UNC		TC214522	22	100	40	8	6.2	9	3	9.4
1/2 - 13UNC		TC214562	25	110	44	9	7	10	3	10.75
9/16 - 12UNC		TC214602	26	110	44	11	9	12	3	12.25
5/8 - 11UNC		TC214642	27	110	44	12	9	12	3	13.5
3/4 - 10UNC		TC214702	30	125	50	14	11	14	4	16.5
7/8 - 9UNC		TC214742	32	140	54	18	14.5	17	4	19.5
1 - 8UNC		TC214782	36	160	60	20	16	19	4	22.25
1-1/8 - 7UNC		TC214822	40	180	70	22	18	21	4	25

►DIN 371(#4~3/8) and DIN 376(7/16~1-1/8)

© : Excellent ○ : Good

ISO	P										M				K						
	Non-alloy steel					Low alloy steel					High alloyed steel, and tool steel		Stainless steel		Grey cast iron	Nodular cast iron		Malleable cast iron			
Material Description	1	2	3	4	5	6	7	8	9	10	11	12	13	14	15	16	17	18	19	20	
VDI 3323	1	2	3	4	5	6	7	8	9	10	11	12	13	14	15	16	17	18	19	20	
HRc	13	25	28	32	30	10	29	32	38	15	35	15	23	10	10	26	3	25	21	21	
HB	125	190	250	270	300	180	275	300	350	200	325	200	240	180	180	260	160	250	130	230	
Recommended	○	○	○	○	○	○	○	○	○	○	○	○	○	○	○	○	○	○	○	○	○

ISO	N					S					H											
	Aluminum-wrought alloy		Aluminum-cast, alloyed		Copper and Copper Alloys (Bronze / Brass)	Non Metallic Materials	Heat Resistant Super Alloys					Titanium Alloys		Hardened steel	Chilled Cast Iron	Hardened Cast Iron						
Material Description	21	22	23	24	25	26	27	28	29	30	31	32	33	34	35	36	37	38	39	40	41	
VDI 3323	21	22	23	24	25	26	27	28	29	30	31	32	33	34	35	36	37	38	39	40	41	
HRc	21	22	23	24	25	26	27	28	29	30	31	32	33	34	35	36	37	38	39	40	41	
HB	60	100	75	90	130	110	90	100			200	280	250	350	320	400Rm	1050Rm	550	630	400	550	
Recommended	○	○	○	○	○	○	○	○	○	○	○	○	○	○	○	○	○	○	○	○	○	○



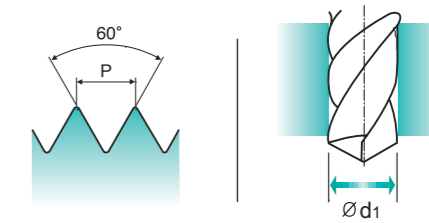
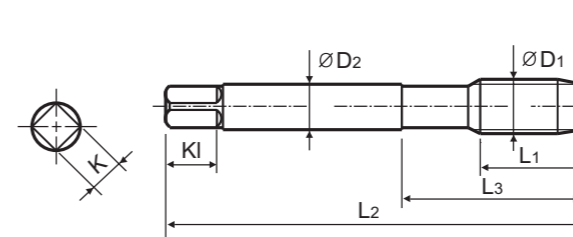
TC234 SERIES

UNF Unified fine threads
 Unified Feingewinde
 UNF
 Unificato passo fine

Machine taps
 Maschinengewindebohrer

► Suitable for through hole in more cutting speed than other taps due to thick web.

► Geeignet für Durchgangslöcher in höherer Schnittgeschwindigkeit als bei anderen Gewindebohrern dank größerer Kerndicke.



Material groups: **GS** HSS-E DIN 371/374 2B 60° B Bright p.B169

Recommended ToolHolder: Plain Shank TAPPING ER CHUCK D215-220 TAPPING CHUCK D221-228 ONE STEP TAPPING CHUCK D211-213

Recommended Cutting Page : P.161 Unit : mm

SIZE	TPI	EDP No.	Thread Length	Overall Length	Neck Length	Shank Diameter	Square Size	Square Length	No. of Flute	Tapping Drill Diameter
ØD1		Bright	L1	L2	L3	ØD2	K	KI	Z	Ød1
#4 - 48UNF		TC234182	11	56	18	3.5	2.7	6	3	2.4
#5 - 44UNF		TC234222	11	56	18	3.5	2.7	6	3	2.7
#6 - 40UNF		TC234262	12	56	20	4	3	6	3	3
#8 - 36UNF		TC234302	13	63	21	4.5	3.4	6	3	3.5
#10 - 32UNF		TC234342	15	70	25	6	4.9	8	3	4.1
#12 - 28UNF		TC234382	16	80	30	6	4.9	8	3	4.7
1/4 - 28UNF		TC234422	17	80	30	7	5.5	8	3	5.5
5/16 - 24UNF		TC234462	17	90	35	8	6.2	9	3	6.9
3/8 - 24UNF		TC234502	18	100	39	9	7	10	3	8.5
7/16 - 20UNF		TC234542	22	100	40	8	6.2	9	3	9.9
1/2 - 20UNF		TC234582	22	100	40	9	7	10	3	11.5
9/16 - 18UNF		TC234622	22	100	40	11	9	12	3	12.9
5/8 - 18UNF		TC234662	22	100	40	12	9	12	3	14.5
3/4 - 16UNF		TC234722	25	110	44	14	11	14	4	17.5
7/8 - 14UNF		TC234762	26	125	50	18	14.5	17	4	20.5
1 - 12UNF		TC234802	28	140	54	18	14.5	17	4	23.25
1-1/8 - 12UNF		TC234842	30	150	60	22	18	21	4	26.5

►DIN 371(#4~3/8) and DIN 374(7/16~1-1/8)

© : Excellent ○ : Good

ISO	P										M				K						
	Non-alloy steel					Low alloy steel					High alloyed steel, and tool steel		Stainless steel		Grey cast iron	Nodular cast iron		Malleable cast iron			
Material Description	1	2	3	4	5	6	7	8	9	10	11	12	13	14	15	16	17	18	19	20	
VDI 3323	1	2	3	4	5	6	7	8	9	10	11	12	13	14	15	16	17	18	19	20	
HRc	13	25	28	32	30	10	29	32	38	15	35	15	23	10	10	26	3	25	21	21	
HB	125	190	250	270	300	180	275	300	350	200	325	200	240	180	180	260	160	250	130	230	
Recommended	○	○	○	○	○	○	○	○	○	○	○	○	○	○	○	○	○	○	○	○	○

ISO	N					S					H											
	Aluminum-wrought alloy		Aluminum-cast, alloyed		Copper and Copper Alloys (Bronze / Brass)	Non Metallic Materials	Heat Resistant Super Alloys					Titanium Alloys		Hardened steel	Chilled Cast Iron	Hardened Cast Iron						
Material Description	21	22	23	24	25	26	27	28	29	30	31	32	33	34	35	36	37	38	39	40	41	
VDI 3323	21	22	23	24	25	26	27	28	29	30	31	32	33	34	35	36	37	38	39	40	41	
HRc	21	22	23	24	25	26	27	28	29	30	31	32	33	34	35	36	37	38	39	40	41	
HB	60	100	75	90	130	110	90	100			200	280	250	350	320	400Rm	1050Rm	550	630	400	550	
Recommended	○	○	○	○	○	○	○	○	○	○	○	○	○	○	○	○	○	○	○	○	○	○