



TC244 SERIES

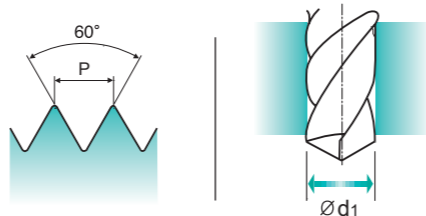
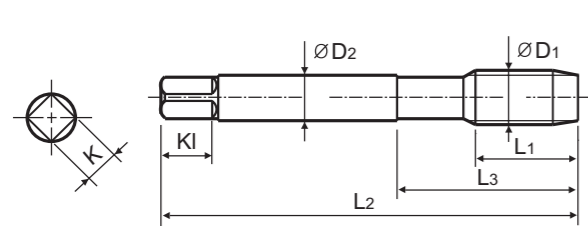
UNC Unified coarse threads

Unified Grobgewinde
 UNC
 Unificato passo grosso

Machine taps
Maschinengewindebohrer

► Suitable for through hole in more cutting speed than other taps due to thick web.

► Geeignet für Durchgangslöcher in höherer Schnittgeschwindigkeit als bei anderen Gewindebohrern dank größerer Kerndicke.



Material groups: **VG** HSS-E DIN 371/376 2B 60° B Bright p.B197

Plain Shank Page
TAPPING ER CHUCK D215-220
TAPPING CHUCK D221-228
ONE STEP TAPPING CHUCK D211-213
Recommended ToolHolder

Unit : mm

SIZE	TPI	EDP No.	Thread Length	Overall Length	Neck Length	Shank Diameter	Square Size	Square Length	No. of Flute	Tapping Drill Diameter
ØD1		Bright	L1	L2	L3	ØD2	K	KI	Z	Ød1
#4	- 40UNC	TC244162	11	56	18	3.5	2.7	6	3	2.3
#5	- 40UNC	TC244202	11	56	18	3.5	2.7	6	3	2.6
#6	- 32UNC	TC244242	12	56	20	4	3	6	3	2.85
#8	- 32UNC	TC244282	13	63	21	4.5	3.4	6	3	3.5
#10	- 24UNC	TC244322	15	70	25	6	4.9	8	3	3.9
#12	- 24UNC	TC244362	16	80	30	6	4.9	8	3	4.5
1/4	- 20UNC	TC244402	17	80	30	7	5.5	8	3	5.2
5/16	- 18UNC	TC244442	20	90	35	8	6.2	9	3	6.6
3/8	- 16UNC	TC244482	22	100	39	9	7	10	3	8
7/16	- 14UNC	TC244522	22	100	40	8	6.2	9	3	9.4
1/2	- 13UNC	TC244562	25	110	44	9	7	10	3	10.75
9/16	- 12UNC	TC244602	26	110	44	11	9	12	3	12.25
5/8	- 11UNC	TC244642	27	110	44	12	9	12	3	13.5
3/4	- 10UNC	TC244702	30	125	50	14	11	14	4	16.5
7/8	- 9UNC	TC244742	32	140	54	18	14.5	17	4	19.5
1	- 8UNC	TC244782	36	160	60	20	16	19	4	22.25
1-1/8	- 7UNC	TC244822	40	180	70	22	18	21	4	25

►DIN 371(#4~3/8) and DIN 376(7/16~1-1/8)

◎ : Excellent ○ : Good

ISO Material Description	P										M				K					
	Non-alloy steel					Low alloy steel					High alloyed steel, and tool steel				Stainless steel		Grey cast iron	Nodular cast iron		Malleable cast iron
VDI 3323	1	2	3	4	5	6	7	8	9	10	11	12	13	14	15	16	17	18	19	20
HRc	13	25	28	32	30	10	29	32	38	15	35	15	23	10	10	26	3	25	21	21
HB	125	190	250	270	300	180	275	300	350	200	325	200	240	180	180	260	160	250	130	230
Recommended	○	○	○	◎	○	○	○	◎	◎	○	○	○	○	○	○	○	○	○	○	○

ISO Material Description	N										S						H					
	Aluminum-wrought alloy		Aluminum-cast, alloyed			Copper and Copper Alloys (Bronze / Brass)					Non Metallic Materials		Heat Resistant Super Alloys						Titanium Alloys		Hardened steel	Chilled Cast Iron
VDI 3323	21	22	23	24	25	26	27	28	29	30	31	32	33	34	35	36	37	38	39	40	41	
HRc	15	30	25	38	34	15	30	25	38	34	15	30	25	38	34	55	60	42	55	55	55	
HB	60	100	75	90	130	110	90	100			200	280	250	350	320	400Rm	1050Rm	550	630	400	550	
Recommended	○	○	○	○	○	○	○	○	○	○	○	○	○	○	○	○	○	○	○	○	○	



TD244 SERIES

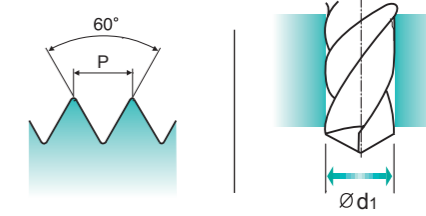
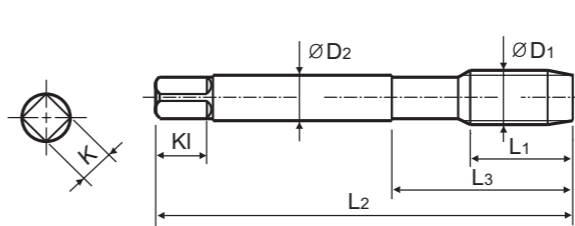
UNC Unified coarse threads

Unified Grobgewinde
 UNC
 Unificato passo grosso

Machine taps
Maschinengewindebohrer

► Suitable for through hole in more cutting speed than other taps due to thick web.

► Geeignet für Durchgangslöcher in höherer Schnittgeschwindigkeit als bei anderen Gewindebohrern dank größerer Kerndicke.



Material groups: **VG** HSS-E DIN 371/376 2B 60° B TiN p.B197

Plain Shank Page
TAPPING ER CHUCK D215-220
TAPPING CHUCK D221-228
ONE STEP TAPPING CHUCK D211-213
Recommended ToolHolder

Unit : mm

SIZE	TPI	EDP No.	Thread Length	Overall Length	Neck Length	Shank Diameter	Square Size	Square Length	No. of Flute	Tapping Drill Diameter
ØD1		TiN	L1	L2	L3	ØD2	K	KI	Z	Ød1
#4	- 40UNC	TD244162	11	56	18	3.5	2.7	6	3	2.3
#5	- 40UNC	TD244202	11	56	18	3.5	2.7	6	3	2.6
#6	- 32UNC	TD244242	12	56	20	4	3	6	3	2.85
#8	- 32UNC	TD244282	13	63	21	4.5	3.4	6	3	3.5
#10	- 24UNC	TD244322	15	70	25	6	4.9	8	3	3.9
#12	- 24UNC	TD244362	16	80	30	6	4.9	8	3	4.5
1/4	- 20UNC	TD244402	17	80	30	7	5.5	8	3	5.2
5/16	- 18UNC	TD244442	20	90	35	8	6.2	9	3	6.6
3/8	- 16UNC	TD244482	22	100	39	9	7	10	3	8
7/16	- 14UNC	TD244522	22	100	40	8	6.2	9	3	9.4
1/2	- 13UNC	TD244562	25	110	44	9	7	10	3	10.75
9/16	- 12UNC	TD244602	26	110	44	11	9	12	3	12.25
5/8	- 11UNC	TD244642	27	110	44	12	9	12	3	13.5
3/4	- 10UNC	TD244702	30	125	50	14	11	14	4	16.5
7/8	- 9UNC	TD244742	32	140	54	18	14.5	17	4	19.5
1	- 8UNC	TD244782	36	160	60	20	16	19	4	22.25
1-1/8	- 7UNC	TD244822	40	180	70	22	18	21	4	25

►DIN 371(#4~3/8) and DIN 376(7/16~1-1/8)

◎ : Excellent ○ : Good

ISO Material Description	P										M				K					
	Non-alloy steel					Low alloy steel					High alloyed steel, and tool steel				Stainless steel		Grey cast iron	Nodular cast iron		Malleable cast iron
VDI 3323	1	2	3	4	5	6	7	8	9	10	11	12	13	14	15	16	17	18	19	20
HRc	13	25	28	32	30	10	29	32	38	15	35	15	23	10	10	26	3	25	21	21
HB	125	190	250	270	300	180	275	300	350	200	325	200	240	180	180	260	160	250	130	230
Recommended	○	○	○	◎	○	○	○	◎	◎	○	○	○	○	○	○	○	○	○	○	○

ISO Material Description	N										S						H					
	Aluminum-wrought alloy		Aluminum-cast, alloyed			Copper and Copper Alloys (Bronze / Brass)					Non Metallic Materials		Heat Resistant Super Alloys						Titanium Alloys		Hardened steel	Chilled Cast Iron
VDI 3323	21	22	23	24	25	26	27	28	29	30	31	32	33	34	35	36	37	38	39	40	41	
HRc	15	30	25	38	34	15	30	25	38	34	15	30	25	38	34	55	60	42	55	55	55	
HB	60	100	75	90	130	110	90	100			200	280	250	350	320	400Rm	1050Rm	550	630	400	550	
Recommended	○	○	○	○	○	○	○	○	○	○	○	○	○	○	○	○	○	○	○	○	○	