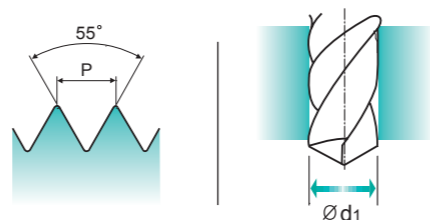
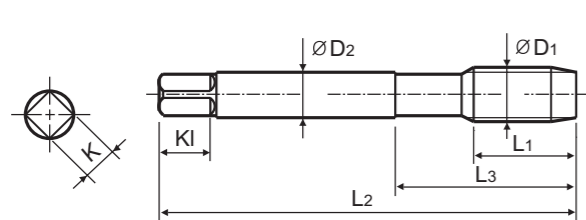


**BSW** Whitworth threads  
 ● Whitworth Gewinde  
 ○ BSW  
 ○ Filettatura Whitworth

Machine taps  
 Maschinengewindebohrer

▶ Suitable for through hole in more cutting speed than other taps due to thick web.

▶ Geeignet für Durchgangslöcher in höherer Schnittgeschwindigkeit als bei anderen Gewindebohrern dank größerer Kerndicke.



Material groups: **GS** HSS-E DIN 2182/2183 55° B Bright p.B169

Plain Shank Page D215-220  
 TAPPING ER CHUCK D221-228  
 Recommended ToolHolder ONE STEP TAPPING CHUCK D211-213

Unit : mm

SIZE	TPI	EDP No.	Thread Length	Overall Length	Neck Length	Shank Diameter	Square Size	Square Length	No. of Flute	Tapping Drill Diameter
ØD1		Bright	L1	L2	L3	ØD2	K	KI	Z	Ød1
W1/8 - 40		TC224200	11	56	18	3.5	2.7	6	3	2.5
W5/32 - 32		TC224280	13	63	21	4.5	3.4	6	3	3.1
W3/16 - 24		TC224320	15	70	25	6	4.9	8	3	3.6
W7/32 - 24		TC224360	16	80	30	6	4.9	8	3	4.4
W1/4 - 20		TC224400	17	80	30	7	5.5	8	3	5.1
W5/16 - 18		TC224440	20	90	35	8	6.2	9	3	6.5
W3/8 - 16		TC224480	22	100	39	9	7	10	3	7.9
W7/16 - 14		TC224520	22	100	40	8	6.2	9	3	9.3
W1/2 - 12		TC224560	25	110	44	9	7	10	3	10.5
W9/16 - 12		TC224600	26	110	44	11	9	12	3	12
W5/8 - 11		TC224640	27	110	44	12	9	12	3	13.5
W3/4 - 10		TC224700	30	125	50	14	11	14	4	16.5
W7/8 - 9		TC224740	32	140	54	18	14.5	17	4	19.25
W1 - 8		TC224780	36	160	60	20	16	19	4	22
W1-1/8 - 7		TC224820	40	180	65	22	18	21	4	24.75

▶ DIN 2182(W1/8~W3/8) and DIN 2183(W7/16~W1-1/8)

◎ : Excellent ○ : Good

ISO	P										M				K					
	Non-alloy steel					Low alloy steel					High alloyed steel, and tool steel		Stainless steel		Grey cast iron	Nodular cast iron		Malleable cast iron		
VDI 3323	1	2	3	4	5	6	7	8	9	10	11	12	13	14	15	16	17	18	19	20
HRC	13	25	28	32	35	10	29	32	38	15	35	15	23	10	10	26	3	25	21	21
HB	125	190	250	270	300	180	275	300	350	200	325	200	240	180	180	260	160	250	130	230
Recommended	○	◎	◎	◎	◎	◎	◎	○	○	○	○	○	○	○	○	○	◎	◎	○	○

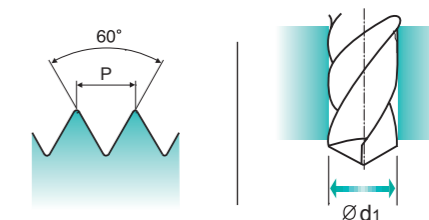
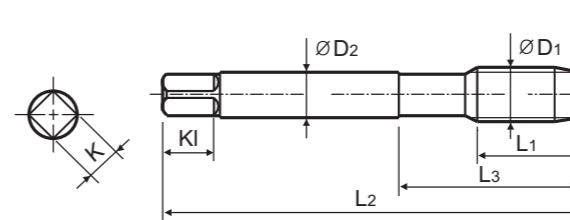
ISO	N										S					H					
	Aluminum-wrought alloy		Aluminum-cast, alloyed			Copper and Copper Alloys (Bronze / Brass)					Non Metallic Materials		Heat Resistant Super Alloys			Titanium Alloys		Hardened steel	Chilled Cast Iron	Hardened Cast Iron	
VDI 3323	21	22	23	24	25	26	27	28	29	30	31	32	33	34	35	36	37	38	39	40	41
HRC	21	22	23	24	25	26	27	28	29	30	15	30	25	38	34	55	60	42	42	55	55
HB	60	100	75	90	130	110	90	100			200	280	250	350	320	400Rm	1050Rm	550	630	400	550
Recommended	○	○	○	◎	◎	○	○	◎													

**M** ISO metric coarse threads DIN 13  
 ● Metrisches ISO-Gewinde DIN 13  
 ○ ISO MÉTRIQUE DIN13  
 ○ ISO Metrico passo grosso DIN 13

Machine taps  
 Maschinengewindebohrer

▶ Suitable for through hole in more cutting speed than other taps due to thick web.

▶ Geeignet für Durchgangslöcher in höherer Schnittgeschwindigkeit als bei anderen Gewindebohrern dank größerer Kerndicke.



Material groups: **GS** HSS-E DIN 376 6H 60° B Bright p.B169

Plain Shank Page D215-220  
 TAPPING ER CHUCK D221-228  
 Recommended ToolHolder ONE STEP TAPPING CHUCK D211-213

Unit : mm

SIZE	Pitch	EDP No.	Thread Length	Overall Length	Neck Length	Shank Diameter	Square Size	Square Length	No. of Flute	Tapping Drill Diameter
ØD1	P	Bright	L1	L2	L3	ØD2	K	KI	Z	Ød1
M3 × 0.5		TC227206	11	56	18	2.2	1.8	5	3	2.5
M3.5 × 0.6		TC227226	12	56	20	2.5	2.1	5	3	2.9
M4 × 0.7		TC227246	13	63	21	2.8	2.1	5	3	3.3
M4.5 × 0.75		TC227266	14	70	25	3.5	2.7	6	3	3.7
M5 × 0.8		TC227286	15	70	25	3.5	2.7	6	3	4.2
M6 × 1		TC227316	17	80	30	4.5	3.4	6	3	5
M7 × 1		TC227346	17	80	30	5.5	4.3	7	3	6
M8 × 1.25		TC227366	20	90	36	6	4.9	8	3	6.8
M9 × 1.25		TC227396	20	90	36	7	5.5	8	3	7.8
M10 × 1.5		TC227426	22	100	40	7	5.5	8	3	8.5
M11 × 1.5		TC227466	22	100	40	8	6.2	9	3	9.5
M12 × 1.75		TC227506	24	110	44	9	7	10	3	10.2
M14 × 2		TC227546	26	110	44	11	9	12	3	12
M16 × 2		TC227606	27	110	44	12	9	12	3	14
M18 × 2.5		TC227656	30	125	50	14	11	14	4	15.5
M20 × 2.5		TC227706	32	140	54	16	12	15	4	17.5
M22 × 2.5		TC227746	32	140	54	18	14.5	17	4	19.5
M24 × 3		TC227786	34	160	60	18	14.5	17	4	21
M27 × 3		TC227866	36	160	60	20	16	19	4	24
M30 × 3.5		TC227946	40	180	70	22	18	21	4	26.5

◎ : Excellent ○ : Good

ISO	P										M				K					
	Non-alloy steel					Low alloy steel					High alloyed steel, and tool steel		Stainless steel		Grey cast iron	Nodular cast iron		Malleable cast iron		
VDI 3323	1	2	3	4	5	6	7	8	9	10	11	12	13	14	15	16	17	18	19	20
HRC	13	25	28	32	35	10	29	32	38	15	35	15	23	10	10	26	3	25	21	21
HB	125	190	250	270	300	180	275	300	350	200	325	200	240	180	180	260	160	250	130	230
Recommended	○	◎	◎	◎	◎	◎	◎	◎	○	○	○	○	○	○	○	○	◎	◎	○	○

ISO	N										S					H					
	Aluminum-wrought alloy		Aluminum-cast, alloyed			Copper and Copper Alloys (Bronze / Brass)					Non Metallic Materials		Heat Resistant Super Alloys			Titanium Alloys		Hardened steel	Chilled Cast Iron	Hardened Cast Iron	
VDI 3323	21	22	23	24	25	26	27	28	29	30	31	32	33	34	35	36	37	38	39	40	41
HRC	21	22	23	24	25	26	27	28	29	30	15	30	25	38	34	55	60	42	42	55	55
HB	60	100	75	90	130	110	90	100			200	280	250	350	320	400Rm	1050Rm	550	630	400	550
Recommended	○	○	○	◎	◎	○	○	◎													