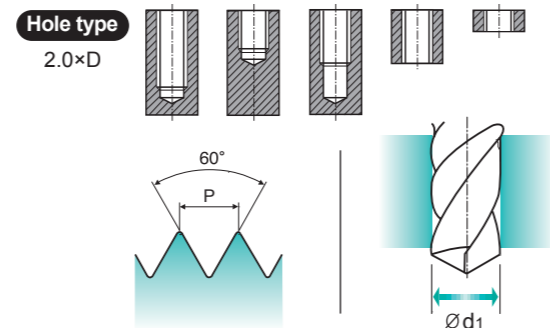
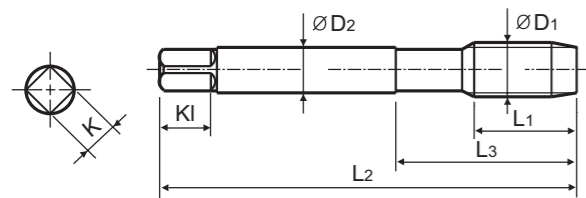


M TiCN-COATED HSS-PM STRAIGHT FLUTE TAPS
ISO Metric Coarse Threads DIN13

TKS35 SERIES



- ▶ Coated HSS-PM (Powder Metallurgy) Taps for high-speed tapping on rigid CNC machines or equivalent machines
- ▶ Up to 3 times faster in tapping compared to conventional taps
- ▶ For high-speed synchro tapping, synchro holder for increasing tool life and thread quality is recommended
- ▶ High precision threads



Material groups: **GG** HSS PM DIN 371/376 6HX 60° C TiCN p.33

Unit : mm

SIZE	Pitch	EDP No.	Thread Length	Overall Length	Neck Length	Shank Diameter	Square Size	Square Length	No. of Flute	Tapping Drill Diameter
ØD1	P	TiCN	L1	L2	L3	ØD2	K	KI	Z	Ød1
M3 × 0.5		TKS35206	5	56	18	3.5	2.7	6	3	2.5
M4 × 0.7		TKS35246	7	63	21	4.5	3.4	6	3	3.3
M5 × 0.8		TKS35286	8	70	25	6	4.9	8	3	4.2
M6 × 1		TKS35316	10	80	30	6	4.9	8	3	5.0
M8 × 1.25		TKS35366	13	90	35	8	6.2	9	3	6.8
M10 × 1.5		TKS35426	15	100	39	10	8	11	4	8.5
M12 × 1.75		TKS35506	18	110	44	9	7	10	4	10.2
M14 × 2		TKS35546	20	110	44	11	9	12	4	12.0
M16 × 2		TKS35606	20	110	44	12	9	12	4	14.0
M18 × 2.5		TKS35656	25	125	50	14	11	14	4	15.5
M20 × 2.5		TKS35706	25	140	54	16	12	15	4	17.5

- ▶ DIN 371 (M3-M10) and DIN 376 (M12-M20)
- ▶ Coating (TiAIN) is available on your request

◎ : Excellent ○ : Good

ISO	P											M				K						
	Non-alloy steel					Low alloy steel						High alloyed steel, and tool steel				Stainless steel		Grey cast iron		Nodular cast iron		Malleable cast iron
Material Description	1	2	3	4	5	6	7	8	9	10	11	12	13	14	15	16	17	18	19	20		
VDI 3323	1	2	3	4	5	6	7	8	9	10	11	12	13	14	15	16	17	18	19	20		
HRc	13	25	28	32	30	10	29	32	38	15	35	15	23	10	10	26	3	25	13	21		
HB	125	190	250	270	300	180	275	300	350	200	325	200	240	180	180	260	160	250	130	230		
Recommended	○	○	○	○	○	○	○	○	○	○	○	○	○	○	◎	◎	◎	◎	○	○		

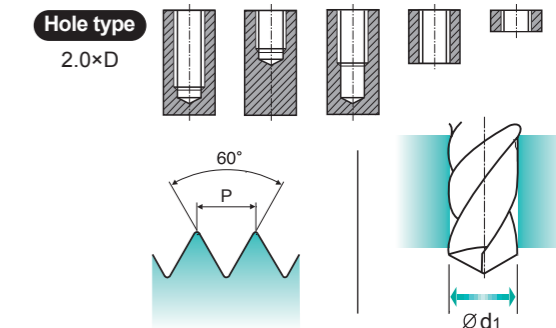
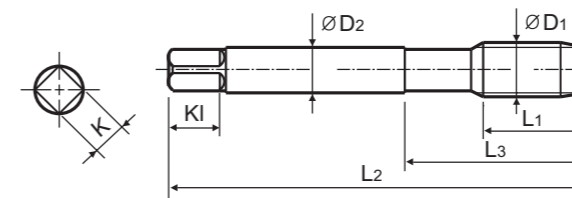
ISO	N										S					H					
	Aluminum-wrought alloy		Aluminum-cast, alloyed			Copper and Copper Alloys (Bronze / Brass)					Non Metallic Materials		Heat Resistant Super Alloys			Titanium Alloys		Hardened steel	Chilled Cast Iron	Hardened Cast Iron	
Material Description	21	22	23	24	25	26	27	28	29	30	31	32	33	34	35	36	37	38	39	40	41
VDI 3323	21	22	23	24	25	26	27	28	29	30	31	32	33	34	35	36	37	38	39	40	41
HRc	60	100	75	90	130	110	90	100			15	30	25	38	34		55	60	42	55	
HB	60	100	75	90	130	110	90	100			200	280	250	350	320	400Rm	1050Rm	550	630	400	550
Recommended	○	○	○	○	○	○	○	○	○	○	○	○	○	○	○	○	○	○	○	○	○

MF TiCN-COATED HSS-PM STRAIGHT FLUTE TAPS **NEW**
ISO Metric Fine Threads DIN13

TKS36 SERIES



- ▶ Coated HSS-PM (Powder Metallurgy) Taps for high-speed tapping on rigid CNC machines or equivalent machines
- ▶ Up to 3 times faster in tapping compared to conventional taps
- ▶ For high-speed synchro tapping, synchro holder for increasing tool life and thread quality is recommended
- ▶ High precision threads



Material groups: **GG** HSS PM DIN 374 6HX 60° C TiCN p.33

Unit : mm

SIZE	Pitch	EDP No.	Thread Length	Overall Length	Neck Length	Shank Diameter	Square Size	Square Length	No. of Flute	Tapping Drill Diameter
ØD1	P	TiCN	L1	L2	L3	ØD2	K	KI	Z	Ød1
M8 × 1.0		TKS36376	10	90	36	6	4.9	8	3	7.0
M10 × 1.25		TKS36436	13	100	40	7	5.5	8	4	8.75
M10 × 1.0		TKS36446	10	90	40	7	5.5	8	4	9.0
M12 × 1.25		TKS36526	13	100	40	9	7	10	4	10.75
M12 × 1.5		TKS36516	15	100	40	9	7	10	4	10.5
M14 × 1.5		TKS36556	15	100	40	11	9	12	4	12.5
M16 × 1.5		TKS36616	15	100	40	12	9	12	4	14.5
M18 × 1.5		TKS36676	17	110	44	14	11	14	4	16.5
M20 × 1.5		TKS36726	17	125	50	16	12	15	4	18.5

- ▶ Coating (TiAIN) is available on your request

◎ : Excellent ○ : Good

ISO	P											M				K						
	Non-alloy steel					Low alloy steel						High alloyed steel, and tool steel				Stainless steel		Grey cast iron		Nodular cast iron		Malleable cast iron
Material Description	1	2	3	4	5	6	7	8	9	10	11	12	13	14	15	16	17	18	19	20		
VDI 3323	1	2	3	4	5	6	7	8	9	10	11	12	13	14	15	16	17	18	19	20		
HRc	13	25	28	32	30	10	29	32	38	15	35	15	23	10	10	26	3	25	13	21		
HB	125	190	250	270	300	180	275	300	350	200	325	200	240	180	180	260	160	250	130	230		
Recommended	○	○	○	○	○	○	○	○	○	○	○	○	○	○	◎	◎	◎	◎	○	○		

ISO	N										S					H					
	Aluminum-wrought alloy		Aluminum-cast, alloyed			Copper and Copper Alloys (Bronze / Brass)					Non Metallic Materials		Heat Resistant Super Alloys			Titanium Alloys		Hardened steel	Chilled Cast Iron	Hardened Cast Iron	
Material Description	21	22	23	24	25	26	27	28	29	30	31	32	33	34	35	36	37	38	39	40	41
VDI 3323	21	22	23	24	25	26	27	28	29	30	31	32	33	34	35	36	37	38	39	40	41
HRc	60	100	75	90	130	110	90	100			15	30	25	38	34		55	60	42	55	
HB	60	100	75	90	130	110	90	100			200	280	250	350	320	400Rm	1050Rm	550	630	400	550
Recommended	○	○	○	○	○	○	○	○	○	○	○	○	○	○	○	○	○	○	○	○	○