

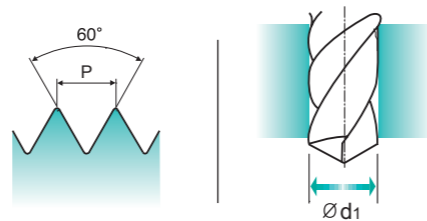
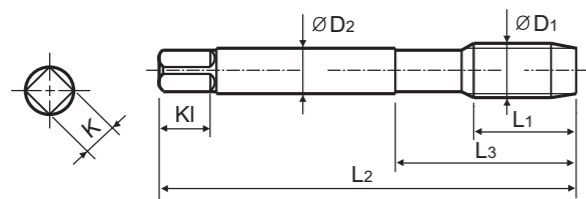
**M ISO metric coarse threads DIN 13**

- Metrisches ISO-Gewinde DIN 13
- ISO MÉTRIQUE DIN13
- ISO Metrico passo grosso DIN 13

Machine taps  
Maschinengewindebohrer

► Suitable for through hole in more cutting speed than other taps due to thick web.

► Geeignet für Durchgangslöcher in höherer Schnittgeschwindigkeit als bei anderen Gewindebohrern dank größerer Kerndicke.



Material groups: **GS** HSS-E DIN 376 6H 60° B TiN p.B169

Plain Shank Page  
TAPPING ER CHUCK D215-220  
TAPPING CHUCK D221-228  
ONE STEP TAPPING CHUCK D211-213  
Recommended ToolHolder

Recommended Cutting Page : P.161

Unit : mm

SIZE	Pitch	EDP No.	Thread Length	Overall Length	Neck Length	Shank Diameter	Square Size	Square Length	No. of Flute	Tapping Drill Diameter
ØD1	P	TiN	L1	L2	L3	ØD2	K	KI	Z	Ød1
M3 × 0.5		TD227206	11	56	18	2.2	1.8	5	3	2.5
M3.5 × 0.6		TD227226	12	56	20	2.5	2.1	5	3	2.9
M4 × 0.7		TD227246	13	63	21	2.8	2.1	5	3	3.3
M4.5 × 0.75		TD227266	14	70	25	3.5	2.7	6	3	3.7
M5 × 0.8		TD227286	15	70	25	3.5	2.7	6	3	4.2
M6 × 1		TD227316	17	80	30	4.5	3.4	6	3	5
M7 × 1		TD227346	17	80	30	5.5	4.3	7	3	6
M8 × 1.25		TD227366	20	90	36	6	4.9	8	3	6.8
M9 × 1.25		TD227396	20	90	36	7	5.5	8	3	7.8
M10 × 1.5		TD227426	22	100	40	7	5.5	8	3	8.5
M11 × 1.5		TD227466	22	100	40	8	6.2	9	3	9.5
M12 × 1.75		TD227506	24	110	44	9	7	10	3	10.2
M14 × 2		TD227546	26	110	44	11	9	12	3	12
M16 × 2		TD227606	27	110	44	12	9	12	3	14
M18 × 2.5		TD227656	30	125	50	14	11	14	4	15.5
M20 × 2.5		TD227706	32	140	54	16	12	15	4	17.5
M22 × 2.5		TD227746	32	140	54	18	14.5	17	4	19.5
M24 × 3		TD227786	34	160	60	18	14.5	17	4	21
M27 × 3		TD227866	36	160	60	20	16	19	4	24
M30 × 3.5		TD227946	40	180	70	22	18	21	4	26.5

◎ : Excellent ○ : Good

ISO Material Description	P										M				K					
	Non-alloy steel					Low alloy steel					High alloyed steel, and tool steel		Stainless steel		Grey cast iron	Nodular cast iron		Malleable cast iron		
VDI 3323	1	2	3	4	5	6	7	8	9	10	11	12	13	14	15	16	17	18	19	20
HRc	13	25	28	32	30	10	29	32	38	15	35	15	23	10	10	26	3	25	21	21
HB	125	190	250	270	300	180	275	300	350	200	325	200	240	180	180	260	160	250	130	230
Recommended	○	◎	◎	◎	◎	◎	◎	○	○	○	○	○	○	○	○	○	◎	◎	○	○

ISO Material Description	N										S					H					
	Aluminum-wrought alloy		Aluminum-cast, alloyed			Copper and Copper Alloys (Bronze / Brass)					Non Metallic Materials		Heat Resistant Super Alloys			Titanium Alloys		Hardened steel	Chilled Cast Iron	Hardened Cast Iron	
VDI 3323	21	22	23	24	25	26	27	28	29	30	31	32	33	34	35	36	37	38	39	40	41
HRc	21	22	23	24	25	26	27	28	29	30	31	32	33	34	35	36	37	38	39	40	41
HB	60	100	75	90	130	110	90	100			200	280	250	350	320	400Rm	1050Rm	550	630	400	550
Recommended	○	○	○	◎	◎	○	◎	◎													

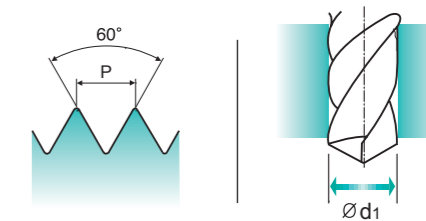
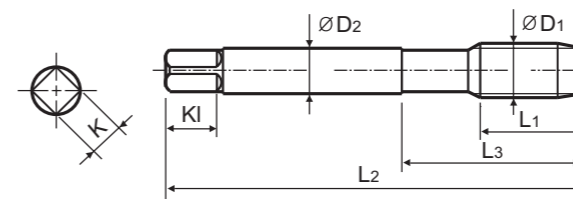
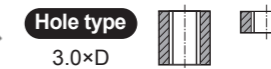
**M ISO metric coarse threads DIN 13**

- Metrisches ISO-Gewinde DIN 13
- ISO MÉTRIQUE DIN13
- ISO Metrico passo grosso DIN 13

Machine taps  
Maschinengewindebohrer

► Left spiral flute and right hand thread tap to push chips ahead in powerful than spiral point taps.

► Rechtsschneidender Gewindebohrer mit Linksdraht um kraftvoller nach vorne zu entspannen als mit Gewindebohrern mit Rechtsdraht.



Material groups: **GS** HSS-E DIN 371/376 6H 60° C Bright L20 p.B169

Plain Shank Page  
TAPPING ER CHUCK D215-220  
TAPPING CHUCK D221-228  
ONE STEP TAPPING CHUCK D211-213  
Recommended ToolHolder

Recommended Cutting Page : P.161

Unit : mm

SIZE	Pitch	EDP No.	Thread Length	Overall Length	Neck Length	Shank Diameter	Square Size	Square Length	No. of Flute	Tapping Drill Diameter
ØD1	P	Bright	L1	L2	L3	ØD2	K	KI	Z	Ød1
M2 × 0.4		TC211136	8	45	13	2.8	2.1	5	3	1.6
M2.2 × 0.45		TC211156	8	45	13	2.8	2.1	5	3	1.75
*M2.3 × 0.4		TC211196	8	45	13	2.8	2.1	5	3	1.9
M2.5 × 0.45		TC211176	9	50	15	2.8	2.1	5	3	2.05
*M2.6 × 0.45		TC211496	9	50	15	2.8	2.1	5	3	2.1
M3 × 0.5		TC211206	11	56	18	3.5	2.7	6	3	2.5
M3.5 × 0.6		TC211226	12	56	20	4	3	6	3	2.9
M4 × 0.7		TC211246	13	63	21	4.5	3.4	6	3	3.3
M4.5 × 0.75		TC211266	14	70	25	6	4.9	8	3	3.7
M5 × 0.8		TC211286	15	70	25	6	4.9	8	3	4.2
M6 × 1		TC211316	17	80	30	6	4.9	8	3	5
M7 × 1		TC211346	17	80	30	7	5.5	8	3	6
M8 × 1.25		TC211366	20	90	35	8	6.2	9	3	6.8
M9 × 1.25		TC211396	20	90	35	9	7	10	3	7.8
M10 × 1.5		TC211426	22	100	39	10	8	11	3	8.5
M11 × 1.5		TC211466	22	100	40	8	6.2	9	3	9.5
M12 × 1.75		TC211506	24	110	44	9	7	10	3	10.2
M14 × 2		TC211546	26	110	44	11	9	12	3	12
M16 × 2		TC211606	27	110	44	12	9	12	3	14
M18 × 2.5		TC211656	30	125	50	14	11	14	4	15.5
M20 × 2.5		TC211706	32	140	54	16	12	15	4	17.5
M22 × 2.5		TC211746	32	140	54	18	14.5	17	4	19.5
M24 × 3		TC211786	34	160	60	18	14.5	17	4	21
M27 × 3		TC211866	36	160	60	20	16	19	4	24
M30 × 3.5		TC211946	40	180	70	22	18	21	4	26.5

► DIN 371(M2~M10) and DIN 376(M11~M30)

► \* DIN profile not ISO

◎ : Excellent ○ : Good

ISO Material Description	P										M				K					
	Non-alloy steel					Low alloy steel					High alloyed steel, and tool steel		Stainless steel		Grey cast iron	Nodular cast iron		Malleable cast iron		
VDI 3323	1	2	3	4	5	6	7	8	9	10	11	12	13	14	15	16	17	18	19	20
HRc	13	25	28	32	30	10	29	32	38	15	35	15	23	10	10	26	3	25	21	21
HB	125	190	250	270	300	180	275	300	350	200	325	200	240	180	180	260	160	250	130	230
Recommended	○	◎	◎	◎	◎	◎	◎	○	○	○	○	○	○	○	○	○	◎	◎	○	○

ISO Material Description	N										S					H					
	Aluminum-wrought alloy		Aluminum-cast, alloyed			Copper and Copper Alloys (Bronze / Brass)					Non Metallic Materials		Heat Resistant Super Alloys			Titanium Alloys		Hardened steel	Chilled Cast Iron	Hardened Cast Iron	
VDI 3323	21	22	23	24	25	26	27	28	29	30	31	32	33	34	35	36	37	38	39	40	41
HRc	21	22	23	24	25	26	27	28	29	30	31	32	33	34	35	36	37	38	39	40	41
HB	60	100	75	90	130	110	90	100			200	280	250	350	320	400Rm	1050Rm	550	630	400	550
Recommended	○	○	○	◎	◎	○	◎	◎													