

Y/G SCREW THREAD INSERT TAPS

TC973 SERIES

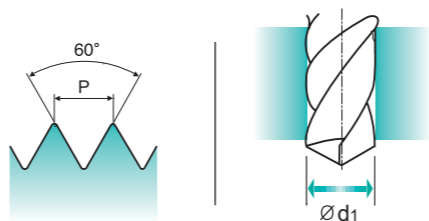
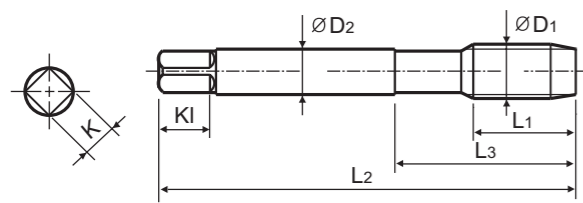
EG-M ISO metric coarse threads for Screw Thread insert

Metrisches ISO Regelgew.f.Gew. Drahteins
ISO MÉTRIQUE DIN13 POUR FILETS RAPPORTÉS
ISO Metrico passo grosso per Helicoil

Machine taps
Maschinengewindebohrer

► Wire insert threads are used for increasing fastening strength in soft materials.

► Gewinde mit Drahteinsätzen werden verwendet um größere Drehmomente in weichen Werkstoffen zu erreichen.



Material groups: **AI** HSS-E DIN 371/376 6H Mod. 60° B Bright p.B306

Recommended ToolHolder: Plain Shank TAPPING ER CHUCK D215-220 TAPPING CHUCK D221-228 ONE STEP TAPPING CHUCK D211-213

Recommended Cutting Page : P.298 Unit : mm

SIZE	Pitch	EDP No.	Thread Length	Overall Length	Neck Length	Shank Diameter	Square Size	Square Length	No. of Flute	Tapping Drill Diameter
ØD1	P	Bright	L1	L2	L3	ØD2	K	Kl	Z	Ød1
M2.5 × 0.45		TC973176	11	56	18	3.5	2.7	6	3	2.65
M3 × 0.5		TC973206	10	63	21	4.5	3.4	6	3	3.15
M3.5 × 0.6		TC973226	14	70	25	6	4.9	8	3	3.7
M4 × 0.7		TC973246	13	70	25	6	4.9	8	3	4.2
M5 × 0.8		TC973286	13	80	30	6	4.9	8	3	5.25
M6 × 1		TC973316	17	90	35	8	6.2	9	3	6.3
M8 × 1.25		TC973366	18	100	39	10	8	11	3	8.4
M10 × 1.5		TC973426	22	110	44	9	7	10	3	10.4
M12 × 1.75		TC973506	26	110	44	11	9	12	3	12.5
M14 × 2		TC973546	27	110	44	12	9	12	3	14.5
M16 × 2		TC973606	30	125	50	14	11	14	4	16.5
M18 × 2.5		TC973656	32	140	54	18	14.5	17	4	18.75
M20 × 2.5		TC973706	34	160	60	18	14.5	17	4	20.75

►DIN 371(M2.5~M8) and DIN 376(M10~M20)

© : Excellent ○ : Good

ISO	P										M				K					
	Non-alloy steel					Low alloy steel					High alloyed steel, and tool steel				Stainless steel		Grey cast iron	Nodular cast iron		Malleable cast iron
VDI 3323	1	2	3	4	5	6	7	8	9	10	11	12	13	14	15	16	17	18	19	20
HRc	13	25	28	32	30	10	29	32	38	15	35	15	23	10	10	26	3	25	21	
HB	125	190	250	270	300	180	275	300	350	200	325	200	240	180	180	260	160	250	130	230
Recommended	○	○	○																	

ISO	N					S					H										
	Aluminum-wrought alloy		Aluminum-cast, alloyed			Copper and Copper Alloys (Bronze / Brass)			Non Metallic Materials		Heat Resistant Super Alloys			Titanium Alloys	Hardened steel	Chilled Cast Iron	Hardened Cast Iron				
VDI 3323	21	22	23	24	25	26	27	28	29	30	31	32	33	34	35	36	37	38	39	40	41
HRc											15	30	25	38	34			55	60	42	55
HB	60	100	75	90	130	110	90	100			200	280	250	350	320	400Rm	1050Rm	550	630	400	550
Recommended	◎	◎	◎	◎		◎															

Y/G SCREW THREAD INSERT TAPS

TC944 SERIES

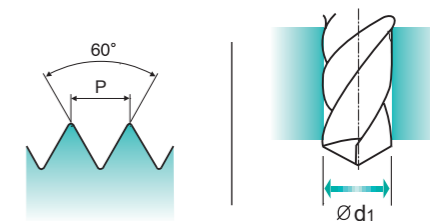
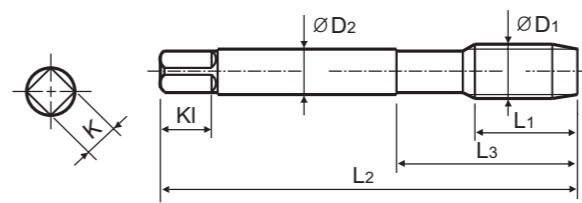
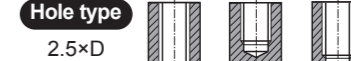
EG-UNC Unified coarse threads for Screw Thread insert

Unified Regelgew.f.Gew.Drahteins
UNC POUR FILETS RAPPORTÉS
ISO Metrico passo grosso per Helicoil

Machine taps
Maschinengewindebohrer

► Wire insert threads are used for increasing fastening strength in soft materials.

► Gewinde mit Drahteinsätzen werden verwendet um größere Drehmomente in weichen Werkstoffen zu erreichen.



Material groups: **AI** HSS-E DIN 371/376 2B 60° C R40 Bright p.B306

Recommended ToolHolder: Plain Shank TAPPING ER CHUCK D215-220 TAPPING CHUCK D221-228 ONE STEP TAPPING CHUCK D211-213

Recommended Cutting Page : P.298 Unit : mm

SIZE	TPI	EDP No.	Thread Length	Overall Length	Neck Length	Shank Diameter	Square Size	Square Length	No. of Flute	Tapping Drill Diameter
ØD1		Bright	L1	L2	L3	ØD2	K	Kl	Z	Ød1
#4 - 40 UNC		TC944162	7	63	21	4.5	3.4	6	3	3.1
#5 - 40 UNC		TC944202	7	63	21	4.5	3.4	6	3	3.4
#6 - 32 UNC		TC944242	8	70	25	6	4.9	8	3	3.8
#8 - 32 UNC		TC944282	8	80	25	6	4.9	8	3	4.4
#10 - 24 UNC		TC944322	10	80	30	7	5.5	8	3	5.2
#12 - 24 UNC		TC944362	10	80	30	7	5.5	8	3	5.8
1/4 - 20 UNC		TC944402	14	90	35	8	6.2	9	3	6.7
5/16 - 18 UNC		TC944442	16	100	39	10	8	11	3	8.4
3/8 - 16 UNC		TC944482	16	110	39	12	9	12	3	10
7/16 - 14 UNC		TC944522	20	110	44	11	9	12	3	11.6
1/2 - 13 UNC		TC944562	22	110	44	12	9	12	3	13.3
9/16 - 12 UNC		TC944602	22	125	50	14	11	14	3	15
5/8 - 11 UNC		TC944642	25	125	50	14	11	14	4	16.5
3/4 - 10 UNC		TC944702	27	140	56	18	14.5	17	4	19.75

►DIN 371(#4~3/8) and DIN 376(7/16~3/4)

© : Excellent ○ : Good

ISO	P										M				K					
	Non-alloy steel					Low alloy steel					High alloyed steel, and tool steel				Stainless steel		Grey cast iron	Nodular cast iron		Malleable cast iron
VDI 3323	1	2	3	4	5	6	7	8	9	10	11	12	13	14	15	16	17	18	19	20
HRc	13	25	28	32	30	10	29	32	38	15	35	15	23	10	10	26	3	25	21	
HB	125	190	250	270	300	180	275	300	350	200	325	200	240	180	180	260	160	250	130	230
Recommended	○	○	○																	

ISO	N					S					H										
	Aluminum-wrought alloy		Aluminum-cast, alloyed			Copper and Copper Alloys (Bronze / Brass)			Non Metallic Materials		Heat Resistant Super Alloys			Titanium Alloys	Hardened steel	Chilled Cast Iron	Hardened Cast Iron				
VDI 3323	21	22	23	24	25	26	27	28	29	30	31	32	33	34	35	36	37	38	39	40	41
HRc											15	30	25	38	34			55	60	42	55
HB	60	100	75	90	130	110	90	100			200	280	250	350	320	400Rm	1050Rm	550	630	400	550
Recommended	◎	◎	◎	◎		◎															