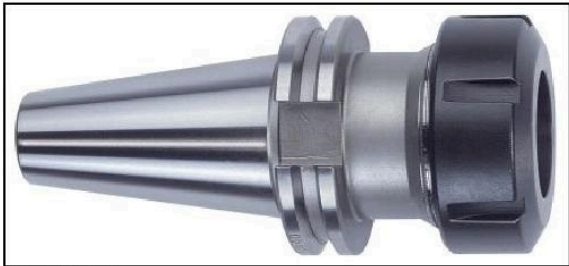


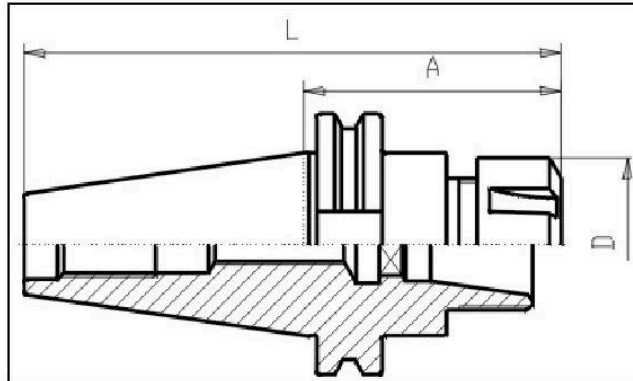
DIN 69871 - Collet Chuck ER - SK30



Illustration



Drawing



Technical information

Usage:	For clamping of toolings with cylindrical shafts. Suitable for central internal coolant flow Form AD.
Scope of delivery:	with clamping-nut DIN 6499.
Accuracy:	taper to inner cone 5µm max.
Customs tariff code:	84 661 02 0
Coolant supply:	Central
Balanced:	G6,3 15.000 rpm

Variants

Product No.	SK	Typ ER	A	Form	L	D	Range ER	weight in kg
G310 30x16x 70	30	16	70	AD	118	32	1-10	0,6
G310 30x16x100	30	16	100	AD	148	32	1-10	0,65
G310 30x25x 70	30	25	70	AD	118	42	2-16	0,65
G310 30x25x100	30	25	100	AD	148	42	2-16	0,8
G310 30x32x 70	30	32	70	AD	118	50	3-20	0,7
G310 30x32x100	30	32	100	AD	148	50	3-20	1