

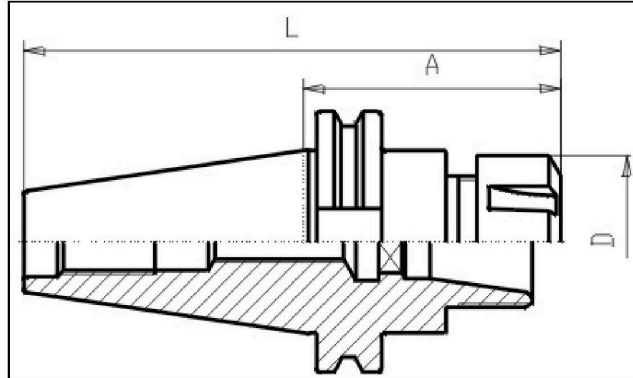
# DIN 69871 - Collet Chuck ER - SK40



## Illustration



## Drawing



## Technical information

<b>Usage:</b>	For clamping of toolings with zylindrical shafts. Suitable for internal coolant flow Form AD/B, this means either central or over the collar. Coolant channels in the collar are closed by a plastic dowel which can be removed if necessary. Please don't re-use the removed plastic dowels.
<b>Scope of delivery:</b>	with clamping-nut DIN 6499.
<b>Accuracy:</b>	taper to inner cone 5µm max.
<b>Other information:</b>	coolant pressure up to 80 bar
<b>Customs tariff code:</b>	84 661 02 0
<b>Coolant supply:</b>	Either Form AD = Central OR Form AD/B = combined coolant version ( Please take a look at the information for each single article).
<b>Balanced:</b>	G6,3 15.000 rpm / fine-balancing on grade G2,5 and/or higher rotations is possible with uplift price

## Variants

Product No.	SK	Typ ER	A	Form	L	D	Range ER	weight in kg
G310 40x16x 63	40	16	63	AD	132	32	1-10	1
G310D40x16x 63	40	16	63	AD/B	132	32	1-10	1
G310 40x16x100	40	16	100	AD	169	32	1-10	1,1
G310D40x16x100	40	16	100	AD/B	169	32	1-10	1,1
G310D40x16x160	40	16	160	AD/B	229	32	1-10	1,3
G310D40x16x200	40	16	200	AD/B	269	32	1-10	1,6

## DIN 69871 - Collet Chuck ER - SK40

G310 40x25x 60	40	25	60	AD	129	42	2-16	1,05
G310D40x25x 60	40	25	60	AD/B	129	42	2-16	1,1
G310 40x25x100	40	25	100	AD	169	42	2-16	1,25
G310D40x25x100	40	25	100	AD/B	169	42	2-16	1,25
G310D40x25x160	40	25	160	AD/B	229	42	2-16	1,6
G310D40x25x200	40	25	200	AD/B	269	42	2-16	--
G310 40x32x 70	40	32	70	AD	139	50	3-20	1,15
G310D40x32x 70	40	32	70	AD/B	139	50	3-20	1,2
G310 40x32x100	40	32	100	AD	169	50	3-20	1,4
G310D40x32x100	40	32	100	AD/B	169	50	3-20	1,4
G310 40x32x120	40	32	120	AD	189	50	3-20	1,6
G310D40x32x120	40	32	120	AD/B	189	50	3-20	1,6
G310D40x32x160	40	32	160	AD/B	229	50	3-20	2
G310D40x32x200	40	32	200	AD/B	269	50	3-20	--
G310 40x40x 80	40	40	80	AD	149	63	4-26	1,35
G310D40x40x 80	40	40	80	AD/B	149	63	4-26	1,4
G310 40x40x120	40	40	120	AD	189	63	4-26	2
G310D40x40x120	40	40	120	AD/B	189	63	4-26	2
G310D40x40x160	40	40	160	AD/B	229	63	4-26	2,6
G310D40x40x200	40	40	200	AD/B	269	63	4-26	2,6