

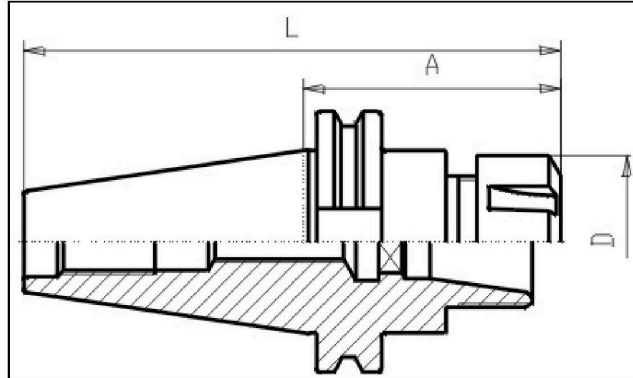
# DIN 69871 - Collet Chuck ER - SK50



## Illustration



## Drawing



## Technical information

<b>Usage:</b>	For clamping of toolings with cylindrical shafts. Suitable for internal coolant flow Form AD/B, this means either central or over the collar. Coolant channels in the collar are closed by a plastic dowel which can be removed if necessary. Please don't re-use the removed plastic dowels.
<b>Scope of delivery:</b>	with clamping-nut DIN 6499.
<b>Accuracy:</b>	taper to inner cone 5µm max.
<b>Customs tariff code:</b>	84 661 02 0
<b>Coolant supply:</b>	Either Form AD = Central OR Form AD/B = combined coolant version ( Please take a look at the information for each single article).
<b>Balanced:</b>	G6,3 15.000 rpm / fine-balancing on grade G2,5 and/or higher rotations is possible with uplift price

## Variants

Product No.	SK	Typ ER	A	Form	L	D	Range ER	weight in kg
G310D50x16x100	50	16	100	AD/B	202	32	1-10	3
G310D50x16x160	50	16	160	AD/B	262	32	1-10	3,3
G310D50x16x200	50	16	200	AD/B	302	32	1-10	3,5
G310 50x25x 60	50	25	60	AD	162	42	2-16	2,9
G310D50x25x 60	50	25	60	AD/B	162	42	2-16	2,9
G310 50x25x100	50	25	100	AD	202	42	2-16	3,25
G310D50x25x100	50	25	100	AD/B	202	42	2-16	3,3
G310D50x25x160	50	25	160	AD/B	262	42	2-16	3,9

## DIN 69871 - Collet Chuck ER - SK50

G310D50x25x200	50	25	200	AD/B	302	42	2-16	4,1
G310 50x32x 70	50	32	70	AD	172	50	3-20	3,1
G310D50x32x 70	50	32	70	AD/B	172	50	3-20	3,1
G310 50x32x100	50	32	100	AD	202	50	3-20	3,5
G310D50x32x100	50	32	100	AD/B	202	50	3-20	3,5
G310D50x32x160	50	32	160	AD/B	262	50	3-20	4,6
G310D50x32x200	50	32	200	AD/B	302	50	3-20	4,8
G310 50x40x 80	50	40	80	AD	182	63	4-26	3,45
G310D50x40x 80	50	40	80	AD/B	182	63	4-26	3,5
G310 50x40x100	50	40	100	AD	202	63	4-26	--
G310D50x40x100	50	40	100	AD/B	202	63	4-26	4
G310D50x40x160	50	40	160	AD/B	262	63	4-26	4,6
G310D50x40x200	50	40	200	AD/B	302	63	4-26	--
G310D50x50x100	50	50	100	AD/B	202	78	6-34	--