

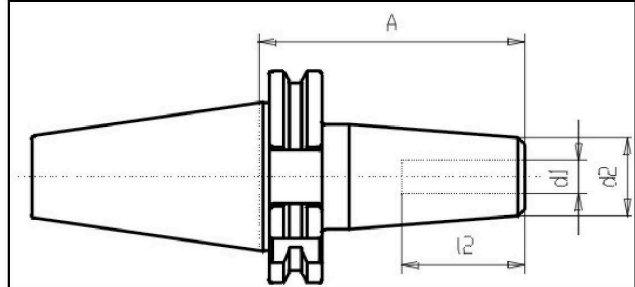
DIN 69871 - Shrink Fit Holder - SK40 AD/B G2,5/20.000 rpm



Illustration



Drawing



Technical information

Usage:	For milling-tools with zylindrical shaft type Weldon DIN 1835 Form B.
Version:	Suitable for internal coolant flow Form AD/B = either central or over collar
Accuracy:	Run-out max. 3 µm.
Customs tariff code:	84 661 02 0
Coolant supply:	combined coolant version AD/B
Balanced:	G2,5 20.000 rpm

Variants

Product No.	SK	d1	A	Form	l2	d2	d3	weight in kg
G328D 40x 3x 80	40	3	80	AD/B	--	12	20	--
G328D 40x 3x120	40	3	120	AD/B	--	12	20	--
G328D 40x 3x160	40	3	160	AD/B	--	12	20	--
G328D 40x 4x 80	40	4	80	AD/B	--	15	25	--
G328D 40x 4x120	40	4	120	AD/B	--	15	25	--
G328D 40x 4x160	40	4	160	AD/B	--	15	25	--
G328D 40x 5x 80	40	5	80	AD/B	--	15	25	--
G328D 40x 5x120	40	5	120	AD/B	--	15	25	--
G328D 40x 5x160	40	5	160	AD/B	--	15	25	--
G328D 40x 6x 80	40	6	80	AD/B	36	20	27	1,05
G328D 40x 6x120	40	6	120	AD/B	36	21	27	--
G328D 40x 6x160	40	6	160	AD/B	36	21	27	1,4

DIN 69871 - Shrink Fit Holder - SK40 AD/B G2.5/20.000 rpm

G328D 40x 8x 80	40	8	80	AD/B	36	20	27	1,05
G328D 40x 8x120	40	8	120	AD/B	36	21	27	--
G328D 40x 8x160	40	8	160	AD/B	36	21	27	1,35
G328D 40x10x 80	40	10	80	AD/B	42	24	32	1,05
G328D 40x10x120	40	10	120	AD/B	42	24	32	--
G328D 40x10x160	40	10	160	AD/B	42	24	32	1,55
G328D 40x12x 80	40	12	80	AD/B	47	24	32	1,05
G328D 40x12x120	40	12	120	AD/B	47	24	32	--
G328D 40x12x160	40	12	160	AD/B	47	24	32	1,55
G328D 40x14x 80	40	14	80	AD/B	47	27	34	1,15
G328D 40x14x120	40	14	120	AD/B	47	27	34	--
G328D 40x14x160	40	14	160	AD/B	47	27	34	1,65
G328D 40x16x 80	40	16	80	AD/B	50	27	34	1,15
G328D 40x16x120	40	16	120	AD/B	50	27	34	--
G328D 40x16x160	40	16	160	AD/B	50	27	34	1,65
G328D 40x18x 80	40	18	80	AD/B	50	33	42	1,25
G328D 40x18x120	40	18	120	AD/B	50	33	42	--
G328D 40x18x160	40	18	160	AD/B	50	33	42	2,05
G328D 40x20x 80	40	20	80	AD/B	52	33	42	1,25
G328D 40x20x120	40	20	120	AD/B	52	33	42	--
G328D 40x20x160	40	20	160	AD/B	52	33	42	2,05
G328D 40x25x100	40	25	100	AD/B	58	44	53	1,7
G328D 40x25x160	40	25	160	AD/B	58	44	53	2,6
G328D 40x32x100	40	32	100	AD/B	58	44	53	1,4
G328D 40x32x160	40	32	160	AD/B	58	44	53	2,4