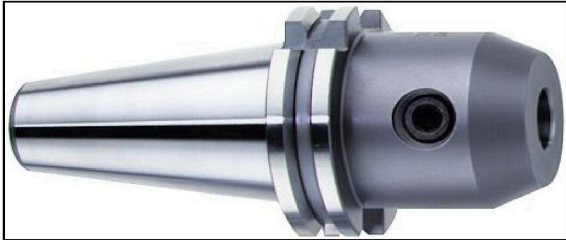


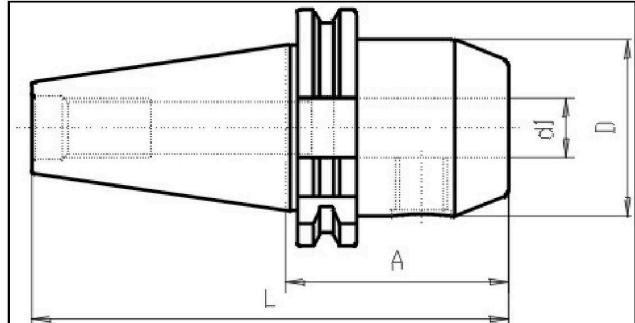
# DIN 69871 - End Mill Holder WELDON - SK40



## Illustration



## Drawing



## Technical information

<b>Usage:</b>	For milling-tools with zylindrical shaft type Weldon DIN 1835 Form B. Suitable for internal coolant flow Form AD/B = either central or over collar. Coolant channels in the collar are closed by a plastic dowel which can be removed if necessary. Please don't re-use the removed plastic dowels.
<b>Scope of delivery:</b>	with 1 clamping screw, from Dia 25mm with 2 screws
<b>Accuracy:</b>	Runout 15µm max. a 3 x d. Due to the eccentric grinding of the bores, the run-out can only be checked by inserting a qualified tool blank. Do NOT measure bore ! (see technical information)
<b>Customs tariff code:</b>	84 661 02 0
<b>Coolant supply:</b>	Either Form AD = Central OR Form AD/B = combined coolant version ( Please take a look at the information for each single article).
<b>Balanced:</b>	G6,3 15.000 rpm / fine-balancing on grade G2,5 and/or higher rotations is possible with uplift price

## Variants

Product No.	SK	d1	A	Form	L	D	weight in kg
G320 40x 6x 50	40	6	50	AD	118	25	0,9
G320D40x 6x 50	40	6	50	AD/B	118	25	0,9
G320 40x 6x100	40	6	100	AD	168	25	1,1
G320D40x 6x100	40	6	100	AD/B	168	25	1,1
G320D40x 6x160	40	6	160	AD/B	228	25	1,3
G320D40x 6x200	40	6	200	AD/B	268	25	1,5
G320 40x 8x 50	40	8	50	AD	118	28	0,95
G320D40x 8x 50	40	8	50	AD/B	118	28	1

## DIN 69871 - End Mill Holder WELDON - SK40

G320 40x 8x100	40	8	100	AD	168	28	1,15
G320D40x 8x100	40	8	100	AD/B	168	28	1,2
G320D40x 8x160	40	8	160	AD/B	228	28	1,45
G320D40x 8x200	40	8	200	AD/B	268	28	1,7
G320 40x 8x250	40	8	250	AD	318	28	1,75
G320 40x10x 50	40	10	50	AD	118	35	1
G320D40x10x 50	40	10	50	AD/B	118	35	1
G320 40x10x100	40	10	100	AD	168	35	1,3
G320D40x10x100	40	10	100	AD/B	168	35	1,3
G320D40x10x160	40	10	160	AD/B	228	35	1,9
G320D40x10x200	40	10	200	AD/B	268	35	2,1
G320 40x10x250	40	10	250	AD	318	35	2,35
G320 40x12x 50	40	12	50	AD	118	42	1,1
G320D40x12x 50	40	12	50	AD/B	118	42	1,1
G320 40x12x100	40	12	100	AD	168	42	1,55
G320D40x12x100	40	12	100	AD/B	168	42	1,6
G320D40x12x160	40	12	160	AD/B	228	42	2,2
G320D40x12x200	40	12	200	AD/B	268	42	2,7
G320 40x12x250	40	12	250	AD	318	42	3
G320 40x14x 50	40	14	50	AD	118	42	1,1
G320D40x14x 50	40	14	50	AD/B	118	42	1,1
G320D40x14x100	40	14	100	AD/B	168	42	1,8
G320D40x14x160	40	14	160	AD/B	228	42	2,3
G320D40x14x200	40	14	200	AD/B	268	42	--
G320 40x16x 35	40	16	35	AD	103	48	--
G320 40x16x 63	40	16	63	AD	131	48	1,3
G320D40x16x 63	40	16	63	AD/B	131	48	1,3
G320 40x16x100	40	16	100	AD	168	48	1,75
G320D40x16x100	40	16	100	AD/B	168	48	1,8
G320D40x16x160	40	16	160	AD/B	228	48	2,6
G320D40x16x200	40	16	200	AD/B	268	48	--
G320 40x16x250	40	16	250	AD	318	48	3,7
G320 40x18x 63	40	18	63	AD	131	48	1,25
G320D40x18x 63	40	18	63	AD/B	131	48	1,3
G320D40x18x100	40	18	100	AD/B	168	48	1,8
G320D40x18x160	40	18	160	AD/B	228	48	2,7
G320D40x18x200	40	18	200	AD/B	268	48	--

## DIN 69871 - End Mill Holder WELDON - SK40

G320 40x20x 35	40	20	35	AD	103	44,45	0,9
G320D40x20x 35	40	20	35	AD/B	103	44,5	0,9
G320 40x20x 63	40	20	63	AD	131	52	1,3
G320D40x20x 63	40	20	63	AD/B	131	52	1,3
G320 40x20x100	40	20	100	AD	168	52	1,85
G320D40x20x100	40	20	100	AD/B	168	52	1,9
G320D40x20x160	40	20	160	AD/B	228	52	2,9
G320D40x20x200	40	20	200	AD/B	268	52	--
G320 40x20x250	40	20	250	AD	318	52	4,15
G320D40x22x 63	40	22	63	AD/B	131	52	1,3
G320 40x22x100	40	22	100	AD	168	52	1,9
G320 40x25x 35	40	25	35	AD	103	44,45	0,85
G320D40x25x 35	40	25	35	AD/B	103	44,45	0,9
G320 40x25x100	40	25	100	AD	168	63	2,25
G320D40x25x100	40	25	100	AD/B	168	63	2,3
G320D40x25x160	40	25	160	AD/B	228	63	3,9
G320D40x25x200	40	25	200	AD/B	268	63	--
G320 40x25x250	40	25	250	AD	318	63	5,65
G320D40x32x 63	40	32	63	AD/B	131	50	--
G320 40x32x100	40	32	100	AD	168	70	2,55
G320D40x32x100	40	32	100	AD/B	168	70	2,6
G320D40x32x160	40	32	160	AD/B	228	70	4,6
G320D40x32x200	40	32	200	AD/B	268	70	--
G320 40x32x250	40	32	250	AD	315	70	--
G320 40x40x120	40	40	120	AD	188	80	3,6
G320D40x40x120	40	40	120	AD/B	188	80	3,6