

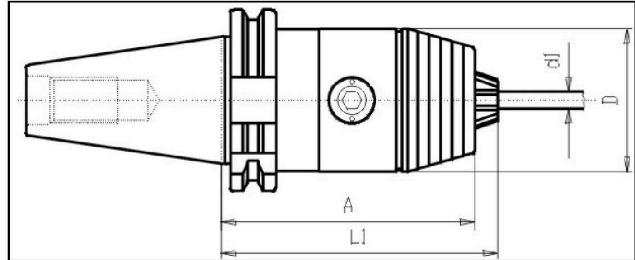
# DIN 69871 - High Precis. Drill Chuck - SK50 Form A



## Illustration



## Drawing



## Technical information

<b>Usage:</b>	For clamping of toolings with zylindrical shafts
<b>Scope of delivery:</b>	with spanner
<b>Accuracy:</b>	Runout max. 20µm
<b>Customs tariff code:</b>	84 661 02 0

## Variants

Product No.	SK	d1	A	l1	Form	D	weight in kg
G334 50x13	50	1-13	110	116	A	50	4,2
G334 50x16	50	3-16	115	121	A	57	4,9