

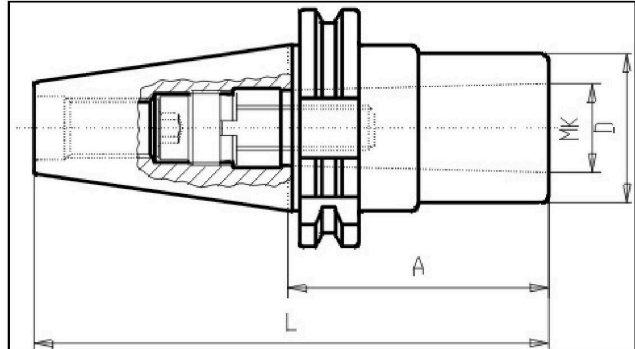
# DIN 69871 - Draw Thread Morse Taper Adap. - SK30



## Illustration



## Drawing



## Technical information

<b>Usage:</b>	For toolings with morse taper and thread
<b>Scope of delivery:</b>	with internal clamping screw
<b>Accuracy:</b>	Runout of taper to inner-MT 10µm max.
<b>Customs tariff code:</b>	84 661 02 0

## Variants

Product No.	SK	Inside MT	A	Form	L	D	weight in kg
G361 30x1x 50	30	1	50	A	98	25	0,5
G361 30x2x 63	30	2	63	A	111	32	0,6
G361 30x3x 82	30	3	82	A	130	40	0,8