

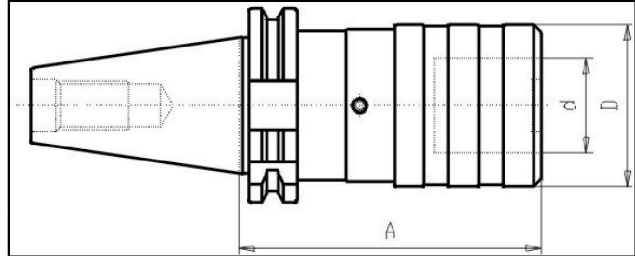
DIN 69871 - Tapping Chuck - SK30 with compensation



Illustration



Drawing



Technical information

Usage:	For fixing bushes for tapping chucks see Group 013. The torque of chamfer start can be adjusted mechanical with an hexagon socket screw. With compensation on press and pull
Customs tariff code:	84 661 02 0

Variants

Product No.	SK	Size	Thread	A	Form	d.	D	weight in kg
G317 30x 1x 60	30	1	M3-M12	60	A	19	38	0,65
G317 30x 2x101	30	2	M8-M20	101	A	31	55	1,25