

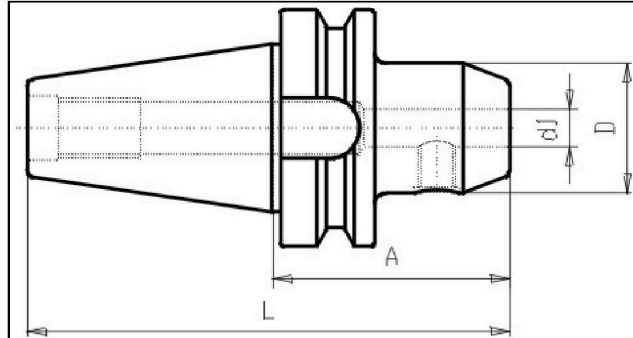
MAS-BT - End Mill Holder WELDON - BT30



Illustration



Drawing



Technical information

Usage:	For milling-tools with cylindrical shaft type Weldon DIN 1835 Form B. Suitable for central coolant flow
Scope of delivery:	with 1 clamping screw, from Dia 25mm with 2 screws
Accuracy:	Runout 15µm max. a 3 x d. Due to the eccentric grinding of the bores, the run-out can only be checked by inserting a qualified tool blank. Do NOT measure bore ! (see technical information)
Customs tariff code:	84 661 02 0
Coolant supply:	Central
Balanced:	G6,3 15.000 rpm

Variants

Product No.	BT	d1	A	Form	L	D	weight in kg
G420 30x 6x 50	30	6	50	AD	98	25	0,5
G420 30x 8x 50	30	8	50	AD	98	28	0,55
G420 30x10x 50	30	10	50	AD	98	35	0,7
G420 30x12x 50	30	12	50	AD	98	42	--
G420 30x14x 50	30	14	50	AD	98	42	0,65
G420 30x16x 63	30	16	63	AD	111	48	0,85
G420 30x16x100	30	16	100	AD	148	48	--
G420 30x20x 63	30	20	63	AD	111	52	0,9
G420 30x20x100	30	20	100	AD	148	52	--