

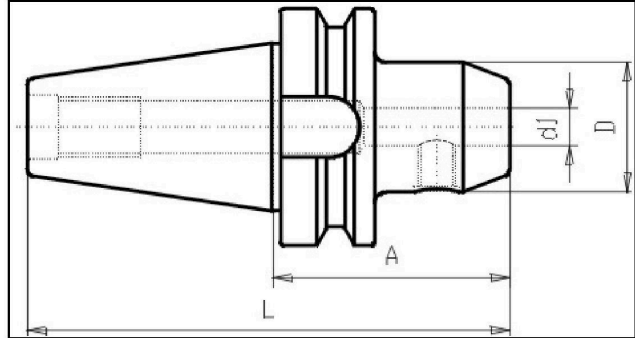
MAS-BT - End Mill Holder WELDON - BT40 G6,3/15.000 rpm



Illustration



Drawing



Technical information

Usage:	For milling-tools with zylindrical shaft type Weldon DIN 1835 Form B. Suitable for central coolant flow
Scope of delivery:	with 1 clamping screw, from Dia 25mm with 2 screws
Accuracy:	Runout 15µm max. a 3 x d. Due to the eccentric grinding of the bores, the run-out can only be checked by inserting a qualified tool blank. Do NOT measure bore ! (see technical information)
Customs tariff code:	84 661 02 0
Coolant supply:	Central
Balanced:	G6,3 15.000 rpm / fine-balancing on grade G2,5 and/or higher rotations is possible with uplift price

Variants

Product No.	BT	d1	A	Form	L	D	weight in kg
G420 40x 6x 50	40	6	50	AD	116	25	1,05
G420 40x 6x100	40	6	100	AD	166	25	1,2
G420 40x 6x160	40	6	160	AD	226	25	1,45
G420 40x 8x 50	40	8	50	AD	116	28	1,1
G420 40x 8x100	40	8	100	AD	166	28	1,25
G420 40x 8x160	40	8	160	AD	226	28	1,6
G420 40x10x 63	40	10	63	AD	129	35	1,2
G420 40x10x100	40	10	100	AD	166	35	1,45
G420 40x10x160	40	10	160	AD	226	35	1,9
G420 40x12x 63	40	12	63	AD	129	42	1,3

MAS-BT - End Mill Holder WELDON - BT40 G6,3/15.000 rpm

G420 40x12x100	40	12	100	AD	166	42	1,65
G420 40x12x160	40	12	160	AD	226	42	2,3
G420 40x14x 63	40	14	63	AD	129	42	1,3
G420 40x14x100	40	14	100	AD	166	42	--
G420 40x14x160	40	14	160	AD	226	42	--
G420 40x16x 63	40	16	63	AD	129	48	1,35
G420 40x16x100	40	16	100	AD	166	48	1,85
G420 40x16x160	40	16	160	AD	226	48	2,75
G420 40x18x 63	40	18	63	AD	129	48	1,35
G420 40x18x100	40	18	100	AD	166	48	--
G420 40x20x 63	40	20	63	AD	129	52	1,4
G420 40x20x100	40	20	100	AD	166	52	2
G420 40x20x160	40	20	160	AD	226	52	2,95
G420 40x25x 35	40	25	35	AD	101	65	0,9
G420 40x25x100	40	25	100	AD	166	65	2,4
G420 40x32x100	40	32	100	AD	166	72	2,75
G420 40x32x160	40	32	160	AD	226	72	4,3
G420 40x40x120	40	40	120	AD	186	90	3,8